



www.mimi.school.co.nz

September 2016

The Mimi School Culture

I have been doing some thinking lately about the school culture here at Mimi School. I was thinking, if someone outside the Mimi community asked me what Mimi School was like, what would my reply be? Where would I start?

So what is culture? Groups of people, no matter how big they are or where they are, all develop and maintain their own culture. Culture is something that is not often observed or noticed until you leave a group. It is more than what we do. Culture is created from the priorities, beliefs, habits and loyalties of individuals within a group. It's how things are, how things operate and reflects how we view the world.

As a staff we created a list of phrases that collectively we thought described the culture at Mimi School currently.

- Whanau oriented.
- Inclusive of all students.
- A place where imaginative play is encouraged.
- The students are enthusiastic towards learning.
- There is a 'can do' attitude among the students.
- A place where students are willing to be challenged with their learning.
- There are respectful relationships between teachers and students, students with students and teachers with their colleagues.

- The students take ownership of their learning.
- There are opportunities to develop academic, sporting and physical skills

The students were asked the question, how would they describe Mimi School? I left the word culture out when I was talking with the students. This is their list.

- Great place to play with friends
- Big playground
- Teachers are awesome/nice.
- We have lots of events like pet day, pyjama day, cross-country, and gala day.
- New students feel welcome.
- There are lots of trees and birds flying around.
- We use computer devices a lot in the classroom.
- There is lots of sports equipment to use at lunchtime and play times.
- We have cool assemblies.
- The swimming pool is good.
- It's a friendly little school.
- It's a happy place.

People let you join in their games.

Everyone knows everyone's names.

So after that bit of research, I am now prepared when someone asks me what Mimi School is like. I hope you are too.



MIMI SCHOOL



where the country, coast, and classroom meet

Produced and published by Mimi School,
23 Pukearuhe Road, RD 44, Urenui, Phone: 06 75 23617
Email: admin@mimi.school.nz

This term at Mimi School we have had a number of organisations come into the school and we have gone out to different events, too. We have had hockey coaching for the students delivered by Taranaki Hockey and the teachers. We have had the Life Education Trust classroom onsite with Harold presenting information about how we can keep our bodies healthy. We have had speeches being prepared and presented by the students and the training for the Tainui Cluster cross-country which was held at Mimi School. The year six students went to the Lead Conference in New Plymouth and we are finishing the term with our Pet Day.

With winter sports now finished for the year, I would like to thank all the parents and staff who were there to organise, support, coach and encourage the students in their involvement in netball, rugby, basketball and hockey throughout the winter season. Your involvement and commitment has given many of our students an opportunity to try a new sport for the first time, allowed some students to develop the skills in a sport further, and allowed for many positive social reactions to occur. So thank you.

The school is very grateful for a very generous grant of \$30 000 from the TSB Community Trust this term. The grant has been targeted to ICT devices in the school, so over the next term you will see new devices being used in the classrooms to resource and support the students learning. The grant will have a huge impact for the students and their teachers.

During term four you will see a change in our staff team at Mimi School. Tara Wade, who has been working as a teacher aide for the last six years, will have her last day as a staff member on the 10th November. She will be moving to Melbourne with her family to live. We wish her and her family all the best for their new start together in Australia. She has been and continues to be a valued member of our team and she will be really, really, really missed when she has gone.

Regards, *Andrew Birchler, Principal*



Mimi School Enrolment Scheme Lifted

This notice is to advise the Mimi School community and surrounding districts that the Enrolment Scheme that has been in place to limit the number of new enrolments to the school has been lifted and is no longer in place. This now means that any child can be enrolled at Mimi School no matter where they live. The lifting of the Enrolment Scheme is effective from the 16th September 2016.



Connect your home or business to any of PrimoWireless' super fast broadband services and they will give \$25 to our school!*

Local internet service provider PrimoWireless is giving us the opportunity to raise some more funds for our school through their PRIMO PAYOUT programme.

We need your help to get a PRIMO PAYOUT for our school!

All you have to do is connect to any one of PrimoWireless' super fast broadband services at your home or work. They will then donate \$25 cash to our school.*

Tell your families and friends

We need you to spread the word to help us make as much money as possible - so please make sure you tell your family and friends to connect to Primo. When they call to connect, they just need to tell the good people at Primo the name of our school and they'll take care of the rest.

***Terms and conditions apply**

This PRIMO PAYOUT offer applies to all their 24 month contracts. For full terms and conditions and to find out more about them please visit primowireless.co.nz/info/primopayout

Why choose PrimoWireless?

PrimoWireless are Taranaki's award winning broadband provider. They are 100% locally owned and operated, and are passionate about supporting families and schools throughout Taranaki by giving everyone access to faster and better internet services.

To get connected, please call Primo's friendly team on 0800 123 774.



0800 123 774
primowireless.co.nz

Follow us

KOWHAI ROOM

Cross Country Reflections

The Cross Country was held at Mimi School on Friday 2nd of September. Lots of people were running. I saw three fluffy sheep. The mud was squishy and dishy. I smelt sausages cooking and heard people saying, 'Go Ryan'. I tasted ice blocks and I tasted sausages. I didn't want to leave.

By Ryan Sarten



On Friday it was Tainui Cross Country at Mimi School. The birds were flying over my head. People were cheering for me. The sheep were fat with too much wool. The track went through three paddocks. We had to run through mud and poos. I had chicken sandwiches and a sausage and an ice block. After the race I felt like a bath, but I felt good.

By Sheldon Fawkner

Cross Country was held at Mimi School on Friday the 2nd of September. There were lots of different schools at Cross Country. I thought I was going to win and I felt nervous. I saw six big woolly sheep. I smelt stinky inky poo. I ran and walked some of the way. At the end of the race I thought I needed a bath.

By Ceejay Hill

On the Cross Country day I tasted ice blocks and juice and chicken sandwiches. They were yummy. I came 5th and I was so close to Toni. I saw fluffy sheep and I nearly got stuck in the oozy mud. At the end of the day I didn't want to go home with Mum and Dad because I wanted to go home on the bus.

By Taytan West



Kokako Squad

Yr 4 & 5 & 6



Speeches

The judges had their work cut out for them. Our senior kids did a fantastic job writing and delivering their speeches with enthusiasm, hand gestures and expression. The following children represented our school at the Tainui Speech Competition; William Groves Y6, James Hill Y5, Zsalea Ellis Y4

Well done kids. You all did a fantastic job!



Exploration Hour

We are still creating awesome things during exploration hour and the kids tell us this is something they especially look forward to every week. Thanks again parents and grandparents for coming in and teaching us new skills. This term we have learnt how to crochet, cook, make fondant monkeys, origami fish with a twist, planting, build and so many other activities of our choice.



Problem Solving

Our Kokako Squad have explored many 'real life' mathematical problems. Among other tasks we have calculated what time it would take us to cook a full meal and have it ready on the table for our parents. We calculated how long it would take to milk in a 20 aside herring bone shed. We had to take into consideration the distance and time to get the cows to and from the shed and what time the farmer would be home to have his meal cooked and ready.



Thankyou Jo Appleyard. The Mimi School carrots look fantastic!!!

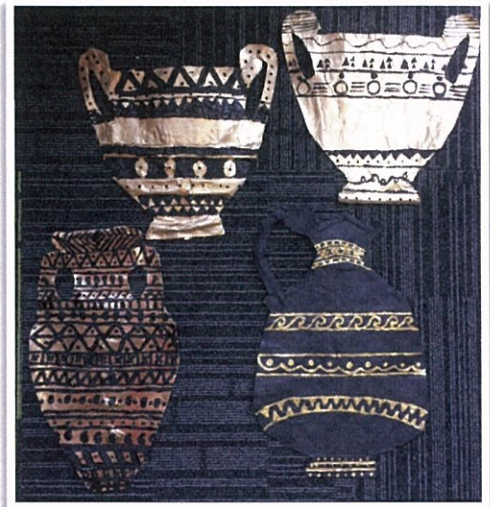
Kokako Olympics



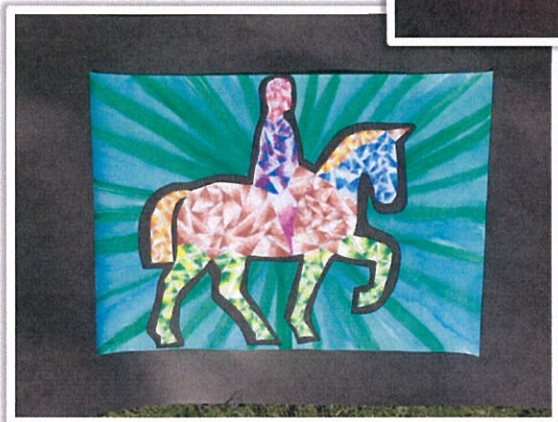
Olympic Mosaic Tiled Rocks



Greek Vases



Geometric Olympic Athlete Silhouettes



Pet Day

Thank you to all the judges, sponsors, our Home and School, all the parents, and last but not least the Mimi students who made our Pet Day another very successful day.



See the collage at the back of this newsletter for more Pet Day Moments.

DVD/s/CD/s Wanted

If you have any DVD/s or CD/s that you no longer use or want, would you be interested in donating them to Norfolk Lodge's Dementia Unit. Especially animated movies like Cars, Shrek, Shark Tale etc. Anything and everything very much appreciated.
Thank you .

Please contact Tammy on 752 3893 or 027 3813820 or drop your donations off at the Mimi School Office.

Taranaki Cross Country Championships

A big congratulations to our four Mimi students who competed in the Taranaki Cross Country Championships in Hawera this week.

Here are the results:

Hannah Lee 4th 11 year old girls

Oliver Redshaw 5th 11 year old boys

Louise Blyde 35th 10 year old girls and

James Hill 51st 10 year old boys.



Te Reo and Kapa Haka

Matua Raymond and Whaea Anne-Maree are teaching TeReo and Kapa Haka on Friday afternoons. This will continue in Term 4 and we thank them both for making the time to teach our children.



Earthworks Rural and Residential

- Diggers, 1, 6, 12 tonne
- Dozers, 4, 16 tonne
- 18 in. tree chipper
- Portable saw mill
- Trucks
- Bobcat



GT Earthworks

Ph: 0210 294 8984



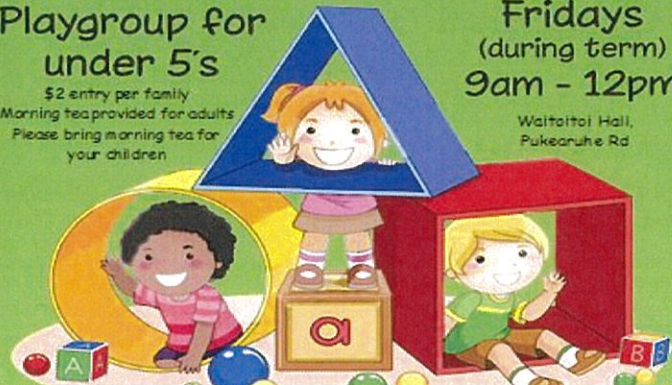
Mimi's Minis Playgroup

Playgroup for
under 5's

\$2 entry per family
Morning tea provided for adults
Please bring morning tea for
your children

Fridays
(during term)
9am - 12pm

Waitaiti Hall,
Pukearuhe Rd



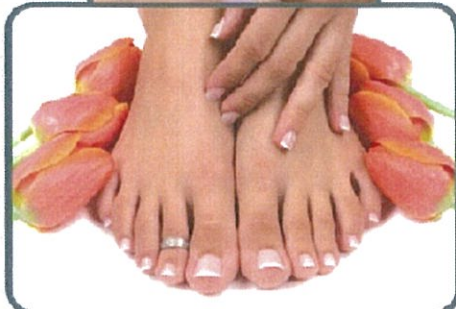
Amanda's mobile beauty therapy

All aspects of beauty in the
comfort of your own home or
at my salon in Waitara!

Gift vouchers available.

Brochures available at the
school office.

Phone: 021 500 499



TERM 4 CALENDAR

TERM 4 STARTS

Mon 10 Oct

LEPPERTON

TOUCH RUGBY BEGINS

Tue 11 Oct

*TAINUI PET DAY

Fri 21 Oct

LABOUR DAY

Mon 24 Oct

1st AID COURSE (Yr 5/6)

Tue 8 Nov

*SAILING Yr 5/6

Wed 9 Nov &
Thur 10 Nov

*TAINUI ATHLETICS

Fri 18 Nov

*TOUGH KID

Fri 2 Dec

* SENIOR CAMP

WHANGANUI (Yr 4-6)

Tue 6 Dec -
Fri 9 Dec

LAST DAY

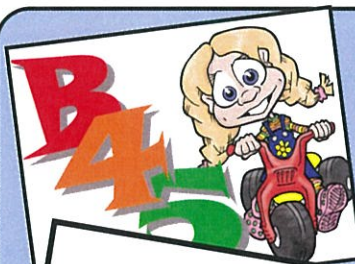
Thur 15 Dec

*LEAVERS' DAY

Fri 16 Dec

* Trips out of school grounds,
(transport may be needed)

Please contact Andrew or Sibylle at school for
further information.



9am-
11am
Fridays

Our weekly pre-school sessions run
on Fridays each week. These ses-
sions are focused on developing the
early skills that our children need to
develop sound literacy and numeracy
skills.

They are also intended to be a lot of
fun for you and your kids as they
become familiar with the class-
room and classroom routines.

If you want to know more about our
B45 pre-school programme phone
the school office, or drop in and ask.

Pet Day Moments

